

RELAX

Designed by
ATELIER XTERIER



VALUE PROPOSAL



Presenting the Relax Armchair, a design that turns the dream of comfort in the open air into reality. With a focus on quality and comfort in every detail, this design allows you to enjoy outdoor relaxation year-round. The innovative use of materials by Atelier Xterier makes this armchair resilient to tough weather conditions. By combining aesthetics and functionality through material choices, the Relax armchair adds comfort, elegance, and sustainability to your outdoor living spaces.

In this product, designers prioritize durability and timeless aesthetics, skillfully blending the warm and natural texture of teak wood with impeccable craftsmanship. Thanks to the moisture-resistant properties of teak wood, the Relax armchair maintains its allure and attractiveness for years to come. Quick-dry foam technology stands out with its ability to dry quickly even in humid weather conditions, allowing you to use the chairs worry-free even after rainfall. The use of Olefin fabric brings indoor comfort and aesthetics to outdoor settings. Olefin, as a durable and aesthetically rich fabric option, encompasses all the desirable features for outdoor furniture.

RELAX

Designed by
ATELIER XTERIER

PRODUCTION TIME



6-8 weeks + Shipping

ASSEMBLY NOTES



The product is delivered assembled.

AREA OF USE



Suitable for both Indoor and Outdoor use.

WARRANTY



The warranty period shall be two years as of the date of delivery of the product.

Any malfunction that arises out of such use of the product that is in breach of the requirements and specifications set forth within the relevant user's manual shall be excluded from the warranty scope.

Warranty does not apply to customer's own fabric, leather, or other materials.

CLEANING & MAINTENANCE



Clean with a damp cloth with no chemical agents.

The maintenance and cleaning instructions for fabric, wood, marble, glass, metal and plastic used in our products are available in the cleaning and maintenance manual.

*Please scan the QR code to see the cleaning and maintenance manual.



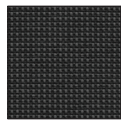
COLOURS & MATERIALS



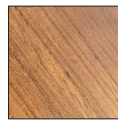
Frame & Leg: Solid teak

Seat Cushion: Upholstered quick-dry foam

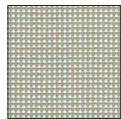
*Color and material preferences cannot be altered for this product.



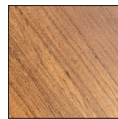
PRAIA 090




TEAK



PRAIA 161



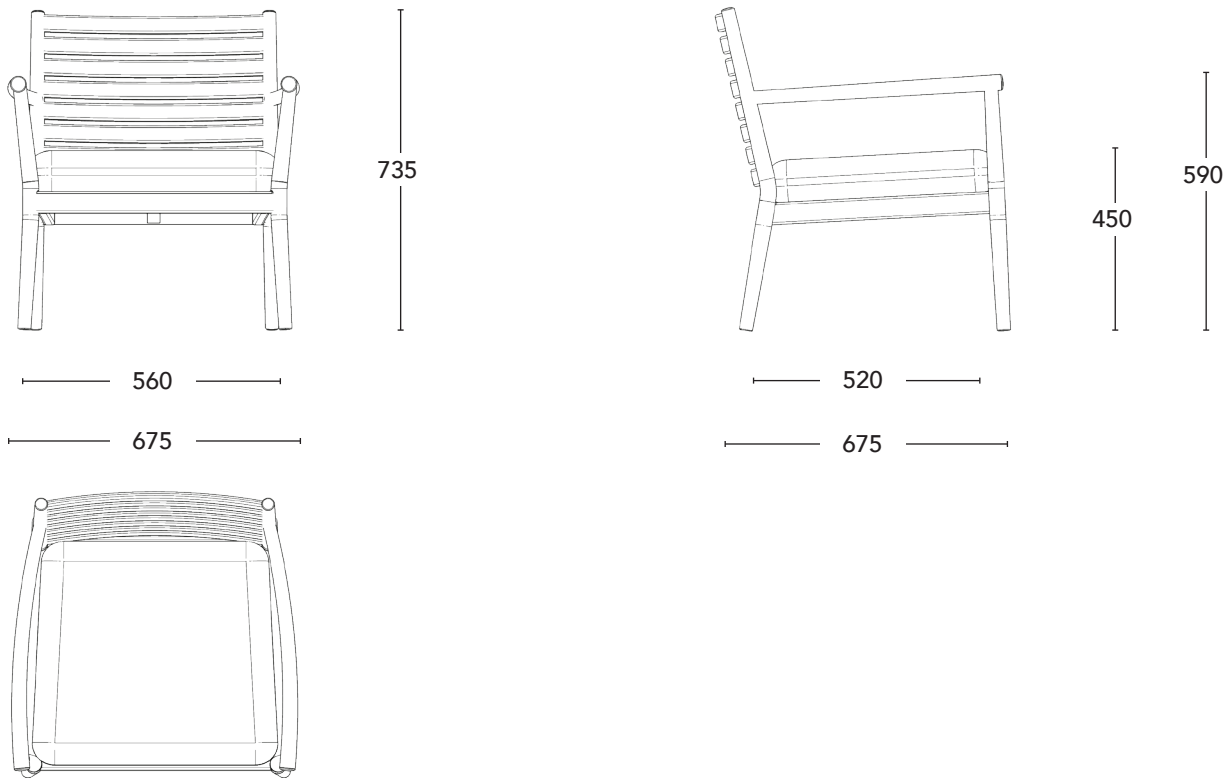
TEAK

1 pcs 
0.394 m³ 16.74 kg
13.91 cbft³ 36.91 lbs

TPOLOGY



RELAX ARMCHAIR



Dimensions:

- Overall Width:** 675 mm / 26.6"
- Overall Depth:** 675 mm / 26.6"
- Overall Height:** 735 mm / 28.9"
- Seat Width:** 560 mm / 22"
- Seat Depth:** 520 mm / 20.5"
- Seat Height:** 450 mm / 17.7"
- Arm Height:** 590 mm / 23.3"

Product Description:

- Relax Chair incorporates quick-dry foam into the seat upholstery and uses Olefin fabric in the cushion covers, presenting a resilient choice of materials for comfortable outdoor seating.
- The cushions are placed onto an elastic webbing base, providing ergonomics and flexibility.
- The frame, arms, and the legs are solid teak wood, finished with teak oil.

ꞑkoleksiyon