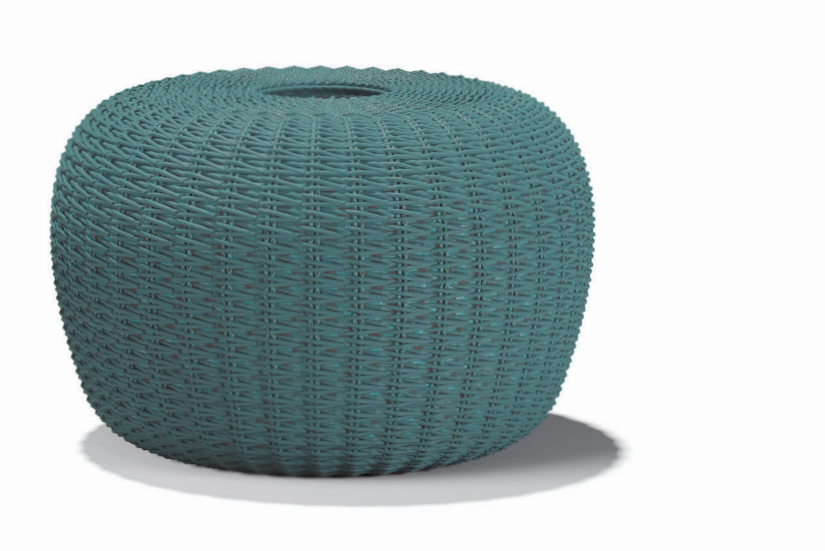


DANTE

Designed by
ATELIER XTERIER



VALUE PROPOSAL



Dante Pouf is a versatile product that can easily adapt to any living space. It combines the comfort and lightness of indoor areas with durability features against outdoor weather conditions. With its geometric design and the Quick Dry feature provided by the sponge, the Dante Pouf offers a ready and comfortable use in your living spaces at any time. It is an ideal choice for relaxation, play, or conversation areas.

DANTE

Designed by
ATELIER XTERIER

PRODUCTION TIME



6-8 weeks + Shipping

ASSEMBLY NOTES



The product is delivered assembled.

AREA OF USE



Suitable for both Indoor and Outdoor use.

WARRANTY



The warranty period shall be two years as of the date of delivery of the product.

Any malfunction that arises out of such use of the product that is in breach of the requirements and specifications set forth within the relevant user's manual shall be excluded from the warranty scope.

Warranty does not apply to customer's own fabric, leather, or other materials.

CLEANING & MAINTENANCE



Clean with a damp cloth with no chemical agents.

The maintenance and cleaning instructions for fabric, wood, marble, glass, metal and plastic used in our products are available in the cleaning and maintenance manual.

*Please scan the QR code to see the cleaning and maintenance manual.

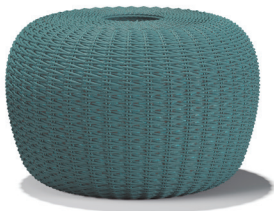


COLOURS & MATERIALS



Seat: Woven rope over a quick dry foam body

*Color and material preference cannot be made other than product images.



MK / R44



MK/R56

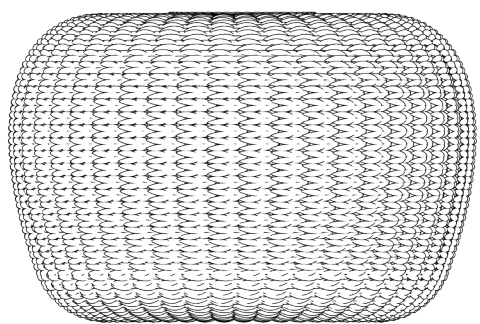


MK/R83

1 pcs
0.276 m³
9.75 cbft³
36.53 kg
80.54 lbs

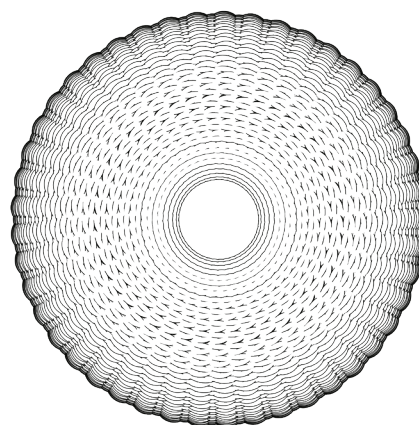


DANTE SERIES



680

470



680

Dimensions:

Width: 680 mm / 26.4"

Depth: 680 mm / 26.4"

Height: 470 mm / 18.1"

Product Description:

- Dante Pouf features a woven rope layer over a quick dry foam body. The materials and surface treatments are suitable for indoor and outdoor use.

ꞑkoleksiyon