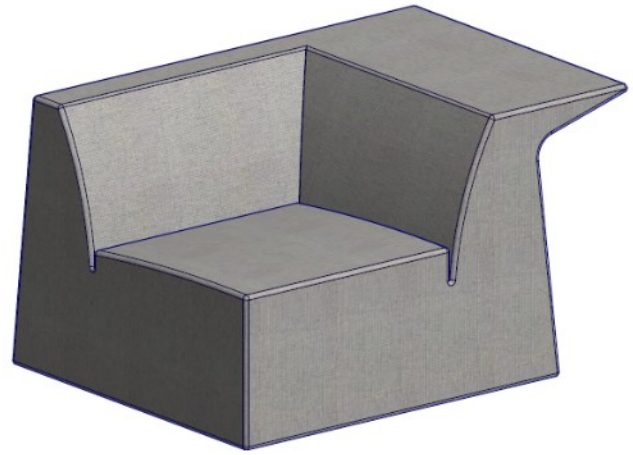
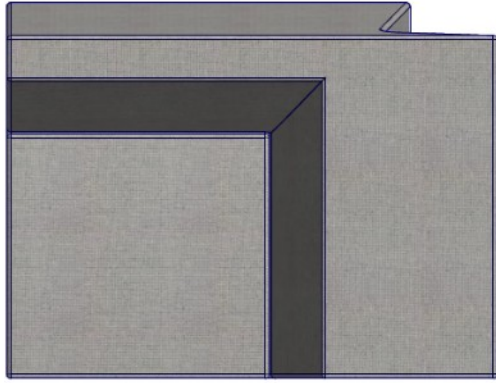
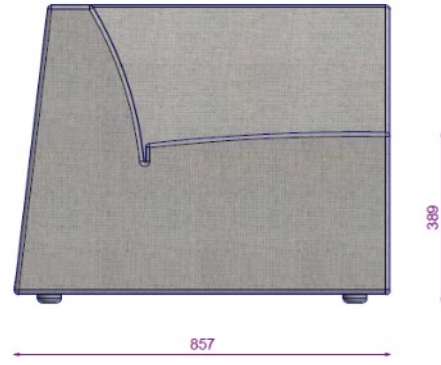
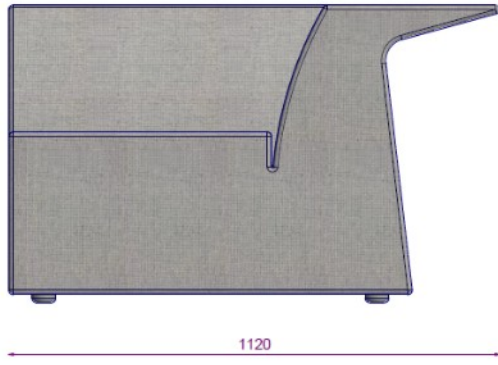


**IKAROS S0**

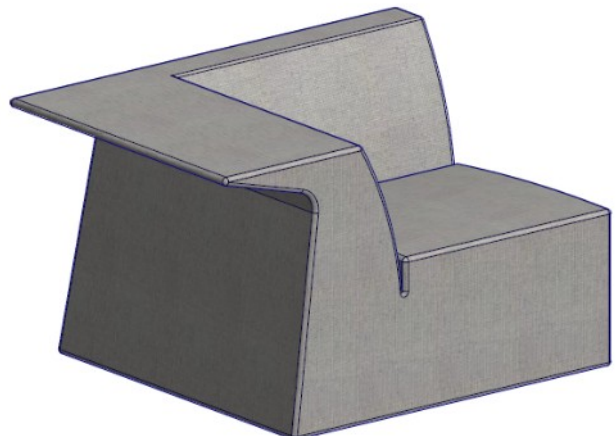
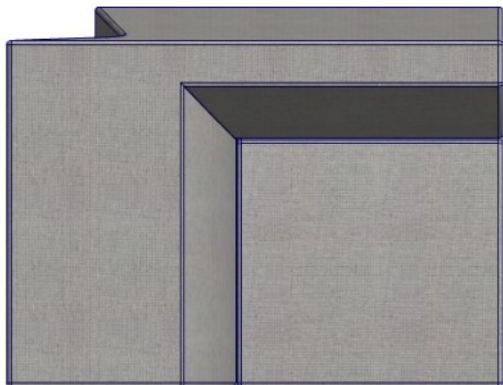
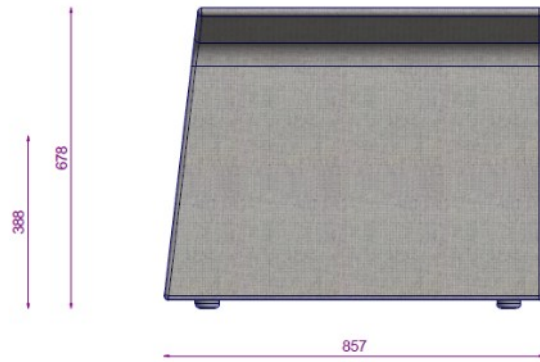
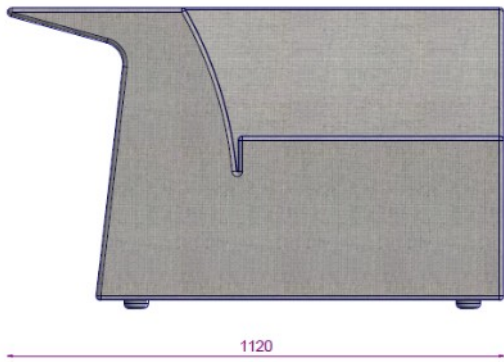
<b>IKAROS S0</b>	
<b>Materials &amp; Finishes</b>	<ul style="list-style-type: none"><li>a- The sofa is produced in a single carcass in a wood structure and with 18mm plywood panels. To achieve a higher quality of upholstery workmanship, the outer sides of the frame is cladded with 5mm flexible plywood, 3mm fibreboard and 3mm MDF.</li><li>b- To achieve the desired flexibility the frame is supported by 450E elastic belts on the seating area. The inner side of the arms and back and front face of the carcass, 2cm gray foam is applied, on all other outer surfaces gray foam is applied and for the top of the back and arms 1cm Eva foam is applied.</li><li>c- After all the foam structure is fabricated a fiber cover is dressed as the final layer before the fabric.</li><li>d- The upholstery is fixed, and a single print stitch is used on all areas, except on the joint line of leather upholstery where the double print stitch is applied.</li></ul>
<b>Assembly;</b>	<ul style="list-style-type: none"><li>e- To assemble the plastic feet to the carcass semi-countersunk screws are used.</li></ul>

IKAROS S0



IKAROS S0 112 SAG KOLLU KOLTUK

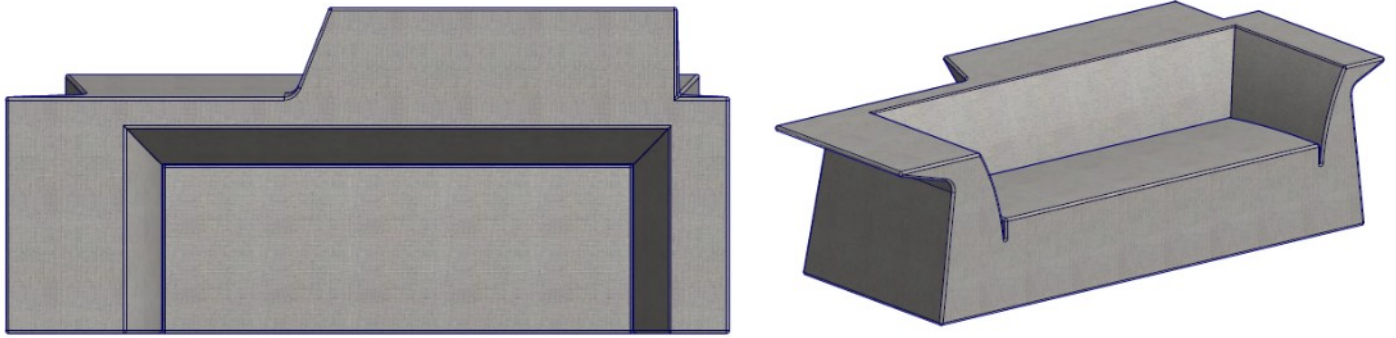
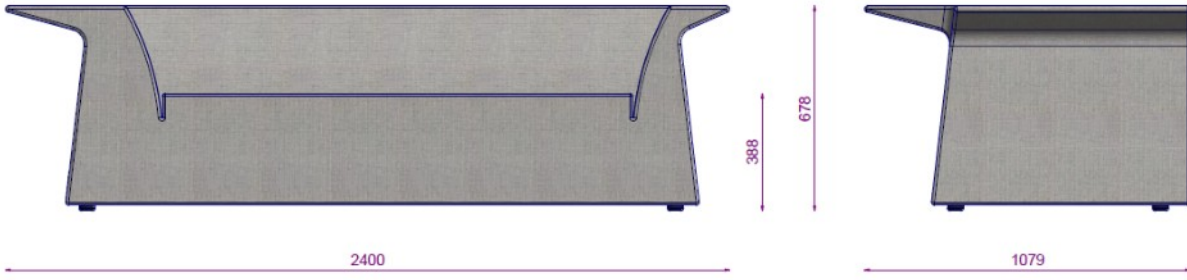
L:1120 D:857 H:678 mm



**IKAROS S0**

IKAROS S0 112 SOL KOLLU KOLTUK

L:1120 D:857 H:678 mm



IKAROS S0 240 KANEPE

L:2400 D:1079 H:678 mm